

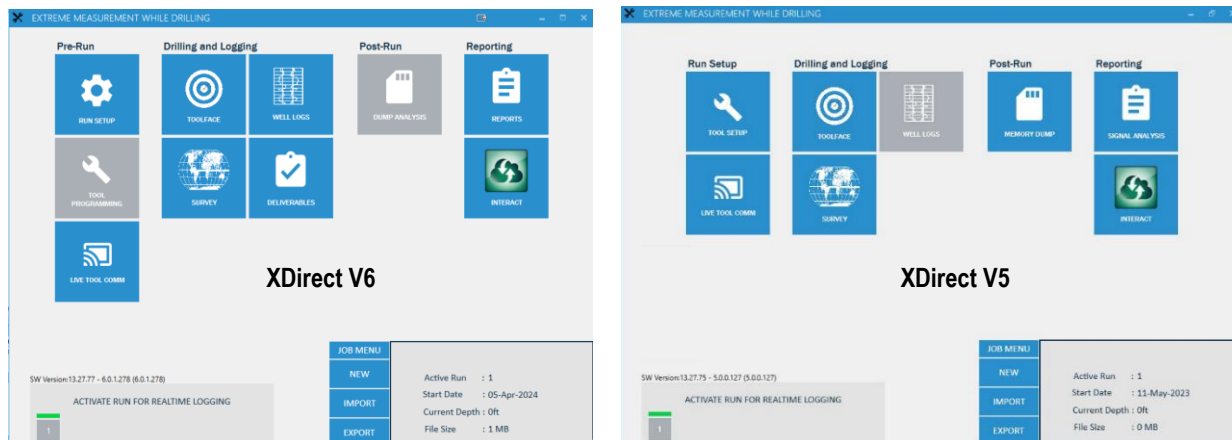


Date: June 5, 2024  
Applicability: XEM and XBOLT  
Issued By: Jack Rader  
InTouch: 8047274 & 8076683

## PROCESS IMPROVEMENTS

The following is a list of improvements and changes made to XDirect from V5.0.0.127 to V6.0.1.301. The surface software is also being updated from V13.27.75 to V13.27.77 with these changes being noted in blue text.

- New Launcher UI with separated Run Setup and Tool Programming Workflows
  - Allows the user to enter job run information without the program attempting to load a tools string.
- BHA Setup and Tool length Calculator integration
  - Offsets and distances can now be calculated inside of XDirect without an external program.
- Fastbus tool dump support
  - Allows xBolt G2 users to dump their tools at much faster rates using high speed XM4s.
- Implemented support for custom EM Tool IDs
  - Allows the user to input serial numbers for every probe to include in the pre and post run reports.
- Added templates for toolface dashboard
  - TF Dashboards can now be saved and loaded without having to reorganize grid items.
- Once a new run begins logging will no longer occur on the new run where data already exists if logging is enabled. Instead, the “Relog” feature will have to be enabled to record data on the new curve.
- Improved pre/post run reports to flag tool serial numbers and tool length calculator outputs
- **HFO data points are supported with the correct data file (Receiver)**
- **Reference sheet for XEM RPM downlinks is corrected**
- Improved live tool comms to support additional firmware features.
- **MudRx diversity channel sync algorithm improvement (Receiver)**
- Improved RM Analysis with more checks integrated
- **xDAG 2D decompression support (Receiver)**
- XLTB2 and xBolt G2-S2 Tool Support
- Various bug fixes



## MOVING FORWARD

XDirect V6 will be installed on all Azonix, Laversab, and ToughBooks moving forward. All 3<sup>rd</sup> party users will be made aware of the updates and provided links to download the new installation. Assistance from the Extreme Command Center will be available to update and answers any questions about the software.

It should be noted that it is recommended to start a new job and clear the chrome cache/cookies when V6 is installed to avoid potential issues with incompatibility between program versions.